
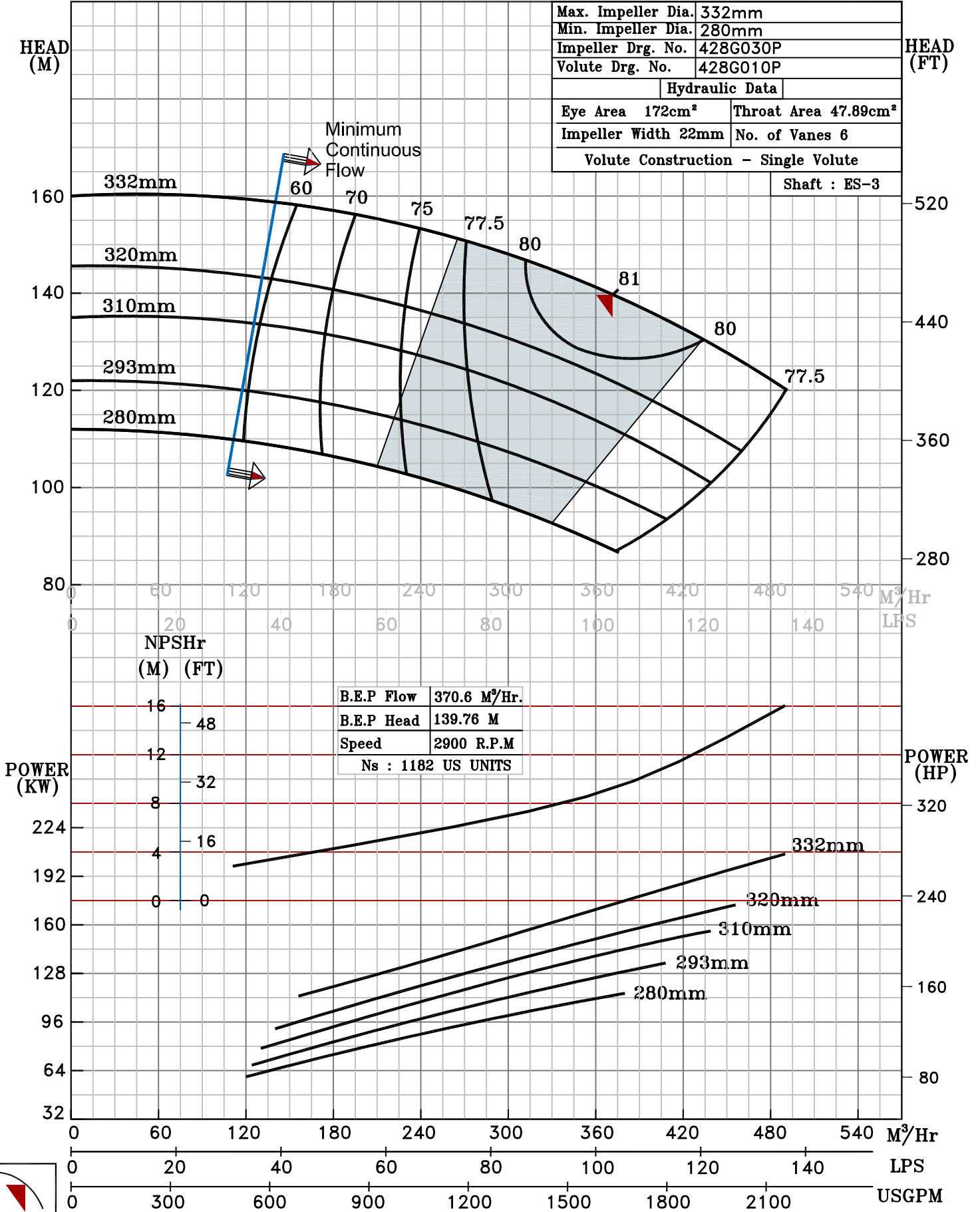


NOTE- PERFORMANCE AS PER ISO 9906 GRADE-2B

PERFORMANCE CURVE OF ES 100-315 @2900 R.P.M		ES 100-315/X/402852	
 PUMPSENSE ISO 2858 ES RANGE	MODEL ES 100-315	WORKING PRESS.	16 bar
	SIZE 125x100-332	TEST PRESS.	24 bar
	TYPE - END SUCTION BACK PULL OUT		
SPEED 2900 rpm			

SHADED REGION ON THE H-Q CURVE REPRESENTS OPTIMUM SELECTION ZONE
 PUMP PERFORMANCE CHARACTERISTICS COMPUTED BASED ON CLEAN COLD WATER S.G 1.0

Max. Impeller Dia.	332mm
Min. Impeller Dia.	280mm
Impeller Drg. No.	428G030P
Volute Drg. No.	428G010P
Hydraulic Data	
Eye Area	172cm ²
Throat Area	47.89cm ²
Impeller Width	22mm
No. of Vanes	6
Volute Construction - Single Volute	
Shaft : ES-3	



2900 RPM